



- Proprietary high performance liner in the elbow increases cable efficiency and greatly increases cable life
- Tool-less adjuster with innovative swivel fitting allows quick and easy cable adjustments
- Tool-less adjuster has built in lubrication port with o-ring cover for easy, no mess maintenance
- All fittings and elbow are anodized billet aluminum construction
- Low friction seals keep dirt and water out delivering smooth, long lasting operation
- Stainless steel inner wire provides durability and additional smoothness
- Assembled with constant viscosity synthetic grease



APPLICATIONS

The increased efficiency of the new T3 Clutch cables provide a lighter, smoother pull offering significantly increased performance and longevity over conventional OE cables.

TEAM GEICO/HONDA



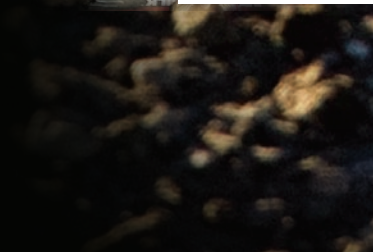
BABBITT'S/MONSTER ENERGY/TI LUBE/KAWASAKI



FMF/SUZUKI OFF-ROAD JOSH STRANG



MUSCLE MILK/JGRMX/TOYOTA



HONDA

MODEL	YEAR	CLUTCH	HOT START
CRF250R	2008 - 2009	02-3003	02-3004
CRF250R	2010-2011	02-3007	
CRF250X	2008 - 2009	02-3002	02-3004
CRF450R	2002 - 2007	02-3005	02-3004
CRF450R	2008	02-3001	02-3004
CRF450R	2009 - 2011	02-3008	
CRF450X	2006 - 2007	02-3000	
CRF450X	2008 - 2009	02-3000	02-3004

KAWASAKI

MODEL	YEAR	CLUTCH	HOT START
KX 250F	2005 - 2008	03-3000	03-3002
KX 250F	2009 - 2010	03-3005	
KX 250F	2011	03-3006	
KLX 450A	2008 - 2009	03-3003	03-3002
KX 450F	2006 - 2008	03-3001	03-3002
KX 450F	2009 - 2011	03-3004	

SUZUKI

MODEL	YEAR	CLUTCH	HOT START
RMZ 250	2005 - 2006	03-3000	03-3002
RMZ 250	2007	04-3001	05-3004
RMZ 250	2008 - 2009	04-3001	04-3002
RMZ 250	2010	04-3003	04-3002
RMX 450	2010	04-3004	
RMZ 450	2008 - 2010	04-3000	04-3002

YAMAHA

MODEL	YEAR	CLUTCH	HOT START
WR 250F	2003 - 2006	05-3003	
WR 250F	2007 - 2009	05-3003	05-3004
WR 250F	2011	05-3003	05-3004
YZ 250F	2006 - 2008	05-3001	
YZ 250F	2009 - 2011	05-3005	
WR 450F	2007 - 2009	05-3002	05-3004
WR 450F	2011	05-3002	05-3004
YZ 450F	2006 - 2008	05-3000	
YZ 450F	2009	05-3006	
YZ 450F	2010 - 2011	05-3007	

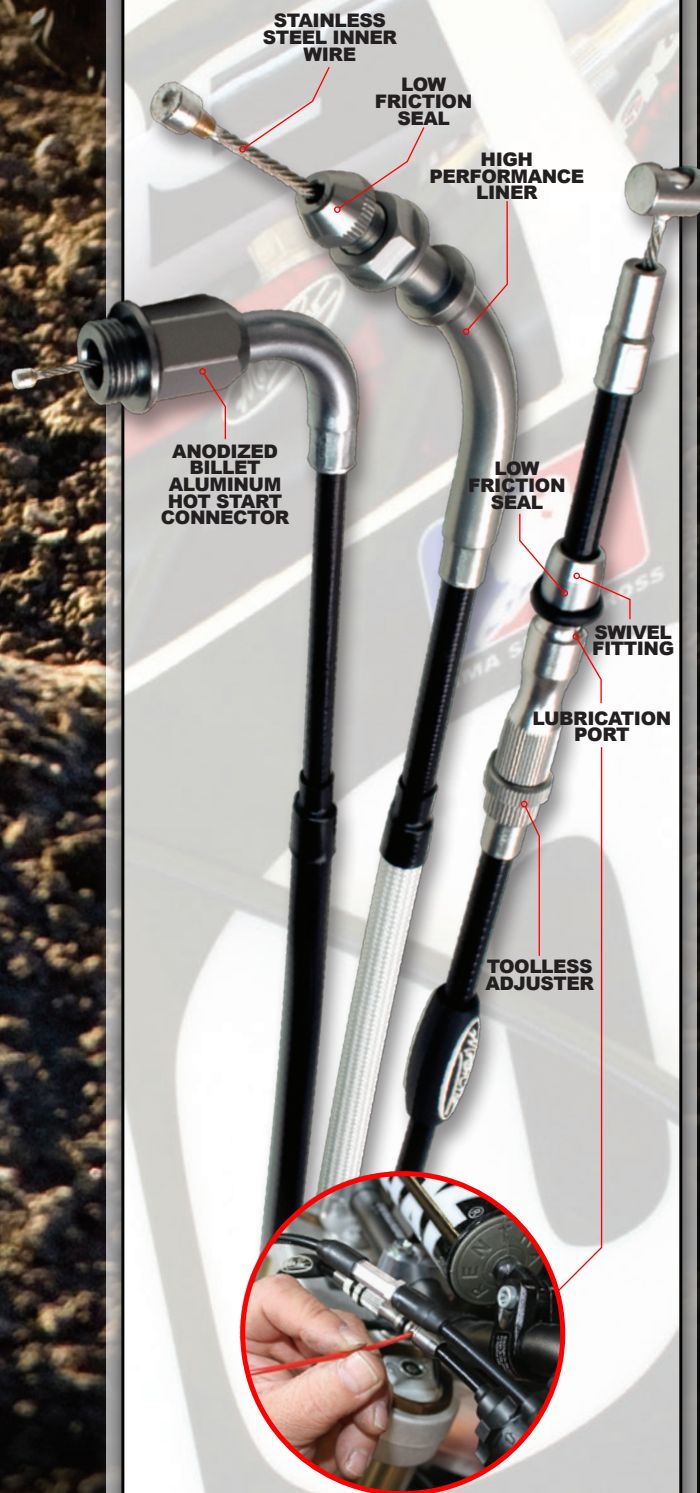
T3 CABLE APPLICATIONS

Scan QR Code



Use Smartphone

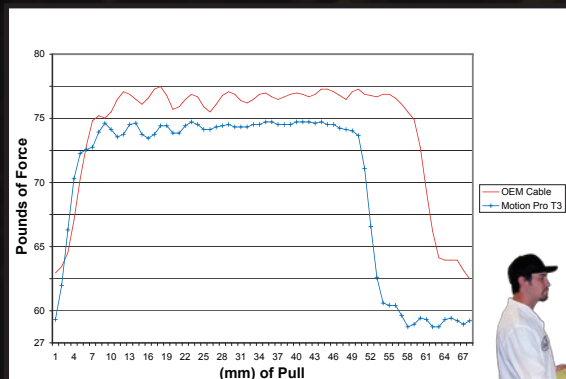
Visit us online for our most current applications:
http://www.motionpro.com/motorcycle/search/by_motorcycle/t3_cables/



SMOOTH | EFFICIENT | DURABLE | INNOVATIVE



- Proprietary high performance liner in the elbow increases cable efficiency and greatly increases cable life
- Tool-less adjuster with innovative swivel fitting allows quick and easy cable adjustments
- Tool-less adjuster has built in lubrication port with o-ring cover for easy, no mess maintenance
- All fittings and elbow are anodized billet aluminum construction
- Low friction seals keep dirt and water out delivering smooth, long lasting operation
- Stainless steel inner wire provides durability and additional smoothness
- Assembled with constant viscosity synthetic grease
- Made in the USA



Our tests show Motion Pro T3™ Slidelight™ clutch cables consistently provide easier, smoother pull throughout the range of movement. Our tests also show that the liner on normal cables can wear out and result in metal to metal contact in less than 1200 cycles, resulting in grinding, friction generating metal to metal contact. Test results prove that the proprietary liner material we use in the T3™ cables can last for 30,000 cycles with only minimal wear. This gives you a longer lasting cable that provides consistent smooth performance long after conventional cables have worn out.



TEAM GEICO / HONDA ELI TOMAC